

## VLP SERIES



- ▶ Outstanding repeatability and linearity
- ▶ Dual seal design for extended reliability and longer life
- ▶ Self-aligning pivot bearing mountings

## VXP SERIES



- ▶ Elastomer damped wipers for shock and vibration durability
- ▶ Potentiometric output
- ▶ VXP series for extended environmental performance

The well proven VLP/VXP series linear position sensor is available up to 250 mm stroke lengths in 25 or 50 mm increments. With self-aligning spherical bearing mounts and an improved O-ring sealing arrangement, the range provides up to +/- 0.1% independent linearity and positioning repeatability to 0.01 mm. Choose the VLP series for IP65 rating with temperature range -40 to +100°C, or the VXP series for extended environmental

performance with IP67 rating and temperature range from -40 to +150°C - with a short term limit of 175°C. The conductive plastic resistance element technology utilised in the VLP/VXP series maintains complete and even contact with very low electrical noise, even under the most arduous physical and environmental conditions.

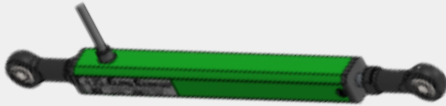
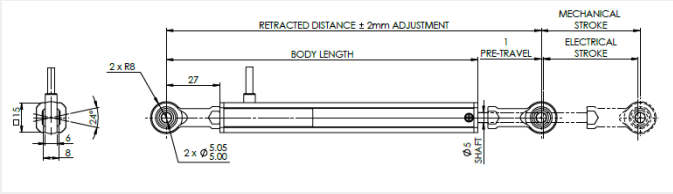
### Specifications

Electrical stroke	25 to 250 mm (8 range options)	Operating temperature	VLP = -40 to +100°C; VXP = -40 to +150°C and 175°C short term
Mechanical stroke	+1.5 mm of electrical stroke	Max supply voltage	42 V DC
Typ. linearity	Up to +/- 0.1% (see table)	Cable type	Raychem 55, 24 AWG
Resolution	Infinite	Cable length	600mm (screened)
Repeatability	Up to +/- 0.01 mm	Life	> 25 x 10 <sup>6</sup> Cycles
Max operating speed	10 m/sec max.	Sealing	VLP = IP65; VXP = IP67
Shock	50 g, 10ms		

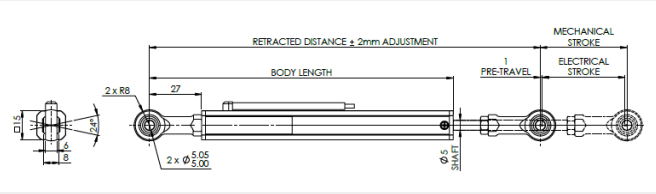
# LINEAR POSITION SENSOR - VLP/VXP SERIES



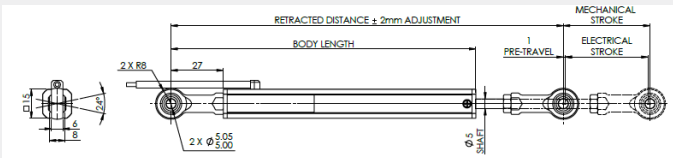
## VLP50



## VXP50



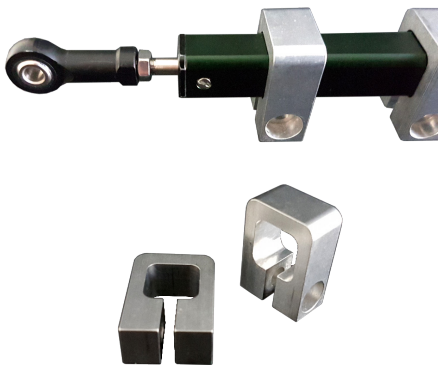
## VXP50 (RCE)



Black: GND/0V  
Red: +VE Supply  
White: Signal Out

The VLP/VXP series linear position sensor is available with an optional mounting bracket and a protective cover.

### Mounting bracket - Part-No. 15858



### Protective cover - Part-No. 4346 (For measuring ranges 50 - 100mm)





## Ordering information

### Sample Code

VLP - 150 -

#### Series

VLP

VXP

#### Electrical stroke

See table below\*

#### Mounting options

Blank Standard

RCE Rear cable exit

### \*Other information

VLP / VXP - model code		25	50	75	100	150	200	250
Total electrical travel - TE	mm	27	52	77	102	152	202	250
Active electrical travel - AE	mm	25	50	75	100	150	200	250
Resistance +/- 20%	kΩ	2.5	5	5	5	10	10	10
Independant linearity	+/-%	0.2	0.2	0.2	0.1	0.1	0.1	0.1
Retracted mounting distance +/- 2 mm	mm	173	198	223	248	298	351	401
Body length	mm	132.5	157.5	182.5	207.5	257.5	310.5	360.5